

# Considerations for Collaboration I: Piloting Training Programs

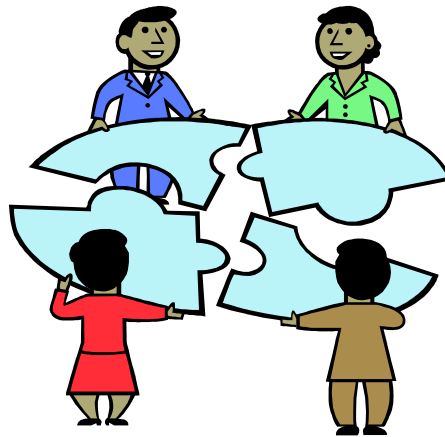
Monday, February 2<sup>nd</sup> from 3:30 to 5:00 P. M.

## Workshop Description:

The increasing complexity of our post-modern world requires sophisticated new models of thinking about providing services, conducting training programs, and developing relational systems. To respond to this need this workshop will present a process and example of a training model based on collaboration with multiple clinical pastoral cognate groups. Panel members from a variety of perspectives will reflect on the strengths and challenges of attending to multiple training programs. Participants will explore creative ways to increase collaboration in their own settings.

## Theme and Focus:

- Learn about piloting training programs and care and counseling services that honor the diversity and shared missions of multiple cognate groups
- hear about a training model
- reflect on strengths and challenges of attending to multiple training missions
- identify ways to increase collaboration



## Presented by:

Clinical pastoral training personnel from Beverly Hospital/NHS, Beverly, MA and Hebrew Rehabilitation Center, Roslindale, MA: John C. Pearson, D.Min. ACPE and AAPC; Junietta B. McCall, D.Min. AAPC; Harry E. Woodley, M.Div. AAPC; Jack Crabb, SJ, ACPE, NACC; Joan Rossi, Ph.D. ACPE; and Mary Martha Thiel, M.Div. ACPE, APC.

## Collaboration requires



Leadership, vision, motivation,  
and people to serve

process, community interest

In our case  
it requires us telling our story  
and you sharing yours.

**Come join us and let's see what happens.**

You will find  
14 Working Steps that can increase collaboration

You will find  
a process for assessing where you have been  
and where you are

You will hear  
about eight major motivators and many site specific stimulators  
for making changes that increase collaboration

You will hear about  
typical issues people face when trying to bring multiple training programs together

You will be introduced  
to a pilot model and piloting process that can help generate opportunities in your setting

Monday, February 2<sup>nd</sup> from 3:30 to 5:00 P. M.